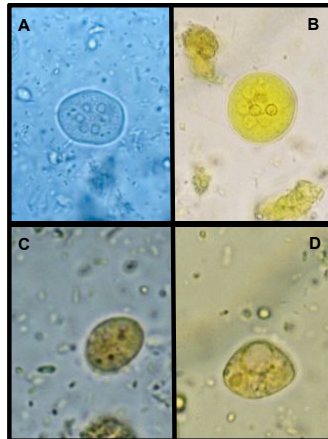
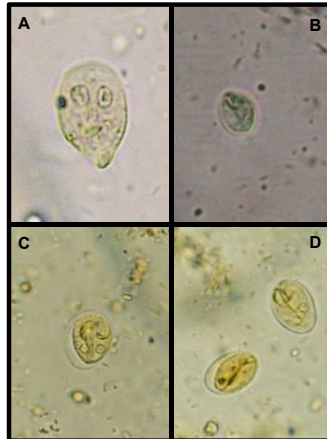


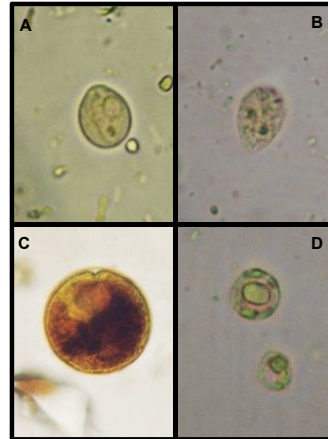
Entamoeba histolytica / *E. moshkovskii* / *E. dispar*: trophozoites stained in MIF (A) and iodine (B) (10-60 µm); immature cyst (C) and mature cyst (D), both in iodine (10-20 µm).



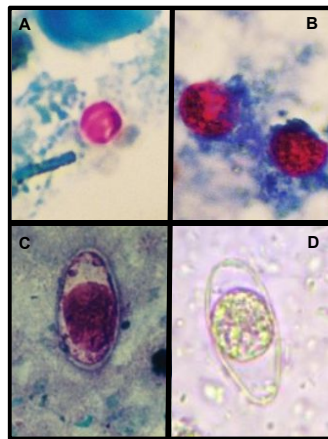
Entamoeba coli: mature cyst (A) and mature cyst in iodine (B) (10-35 µm); *Endolimax nana* (C): mature cyst in iodine (5-10 µm); *Iodamoeba buetschlii* (D): cyst in iodine (5-20 µm).



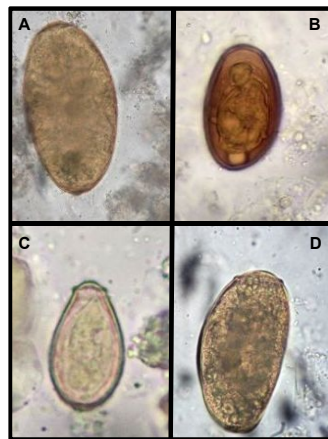
Giardia intestinalis: (A) trophozoite (10-20 µm); (B) cyst in sediment from concentration technique (8-19 µm); (C, D): cysts in lugol (8-19 µm).



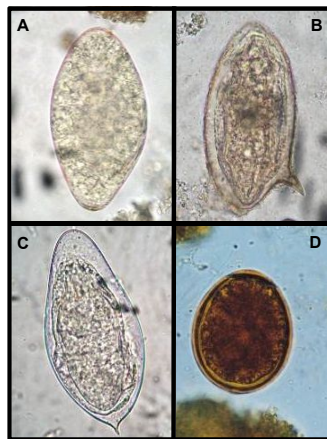
Chilomastix mesnili (A): cyst in iodine (5-9 µm); *Dentamoeba fragilis* (B): trophozoite in iodine (5-15 µm); *Balantidium coli* (C): cyst in iodine (50-70 µm); *Blastocystis hominis* (D): vacuolar forms (4-30 µm).



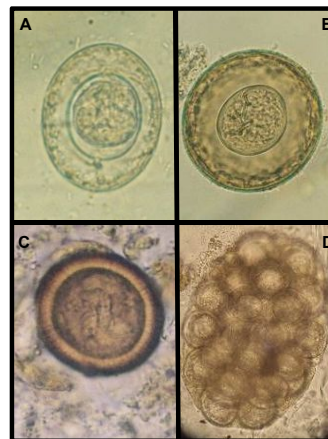
Cryptosporidium sp. (A), *Cyclospora cayentanensis* (B) and *Isospora hominis* (C): oocysts in modified Ziehl Neelsen technique (A: 4-6 µm; B: 7.5-10 µm; C: 20-33 x 10-19 µm); *Isospora hominis* (D): immature oocyst in wet mount (20-33 x 10-19 µm).



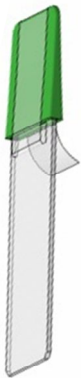
Fasciola hepatica (A), *Dicrocoelium dendriticum* (B), *Clonorchis sinensis* (C) and *Paragonimus* spp. (D): eggs in sediments from concentration technique (A: 130-150 x 63-90 µm; B: 38-45 x 22-30 µm; C: 25-35 x 11-19 µm; D: 60-120 x 40-70 µm).



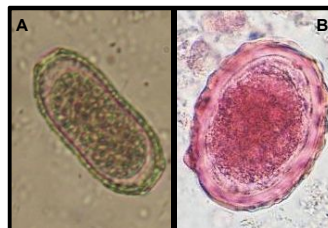
Echinostoma sp. (A), *Schistosoma mansoni* (B), *S. haematobium* (C) and *Diphylobothrium* spp.: eggs in sediments from concentration technique (A: 80-135 x 55-80 µm; B: 114-180 x 45-73 µm; C: 112-170 x 40-70 µm; D: 58-76 x 40-51 µm).



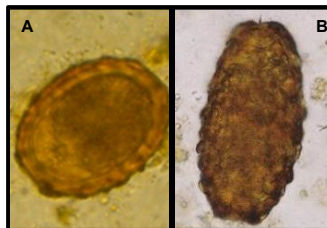
Hymenolepis nana (A), *Hymenolepis diminuta* (B) and *Taenia* spp. (C): eggs in sediments from concentration technique; *Dipylidium caninum* (D): typical egg packet cluster (A: 40-60 x 30-50 µm; B: 70-86 x 60-80 µm; C: 30-44 µm; D: 25-40 µm).



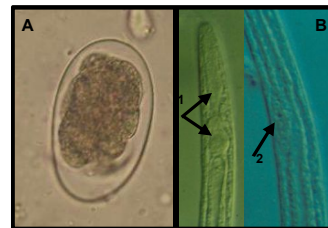
Enterobius vermicularis (A) and *Trichuris trichiura* (B): eggs in wet mount (A: 50-60 x 20-30 µm; B: 50-55 x 22-24 µm).



Capillaria philippinensis (A) and *Ascaris lumbricoides* (B): egg in wet mount (A) and the wet mount stained with MIF (B); (A: 36-45 x 20-22 µm; B: 55-75 x 35-50 µm).



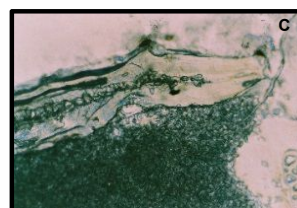
Ascaris lumbricoides: fertile corticated egg (A) and infertile corticated egg (B); (A: 55-75 x 35-50 µm; B: 85-95 x 43-47 µm).



Hookworms (*Ancylostoma* - *Necator*): (A): fertile egg; *Strongyloides stercoralis* (B): rhabditoid larvae with esophagus (1) and genital primordium (2) (A: 55-75 x 36-40 µm; B: 180-380 x 14-20 µm).

Graham Test Safe & Clean®

Enterobius vermicularis detection



Graham Test: (A, B): *Enterobius vermicularis* eggs (50-60 x 20-30 µm); (C) *E. vermicularis* female with eggs; (D) *Taenia* sp. eggs on the scotch tape of the Graham Test (30-44 µm).

Done on fixed stool using **REAL MiniSystem, MidiSystem and Graham Test Safe & Clean**. Available fixation media: **SAF, ECOSAF, MIF, TOTAL-FIX**. Images courtesy of Dr. Guillermo Esteban. Professor of Parasitology. Faculty of Pharmacy, University of Valencia, Spain.